

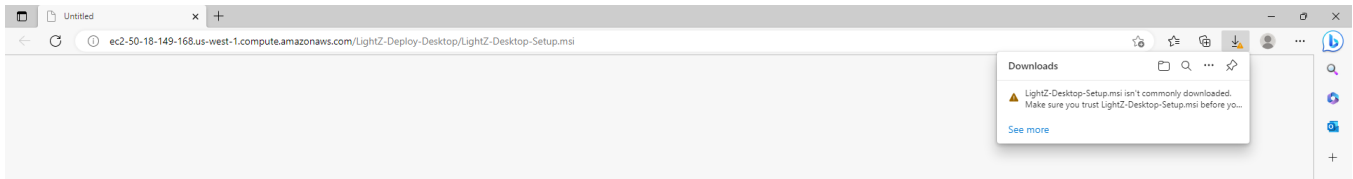
LightZ-4all™ Desktop Installation & Training Guide

Welcome to LightZ-4all™ and to install on your desktop, please go to the link to start the installation program:

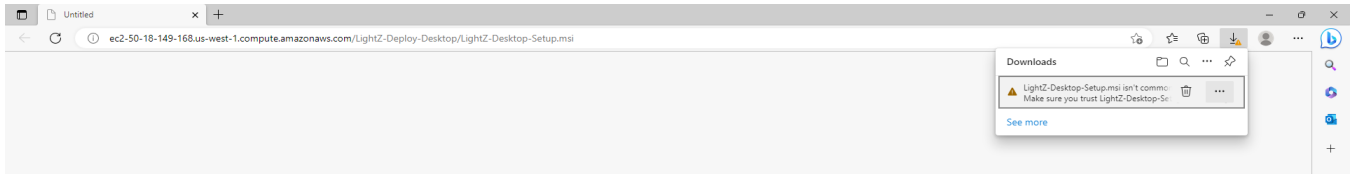
<http://ec2-50-18-149-168.us-west-1.compute.amazonaws.com/LightZ-4All-Deploy/LightZ-4All.msi>

NOTE: LightZ-4all™ is for Windows only computers version 10 or higher with minimum 8GB memory. You can create any number of models, but the total size of all models collectively is limited to 25GB. For any questions, please contact Robert J Zwerling at rzwerling@aurorapredictions.com.

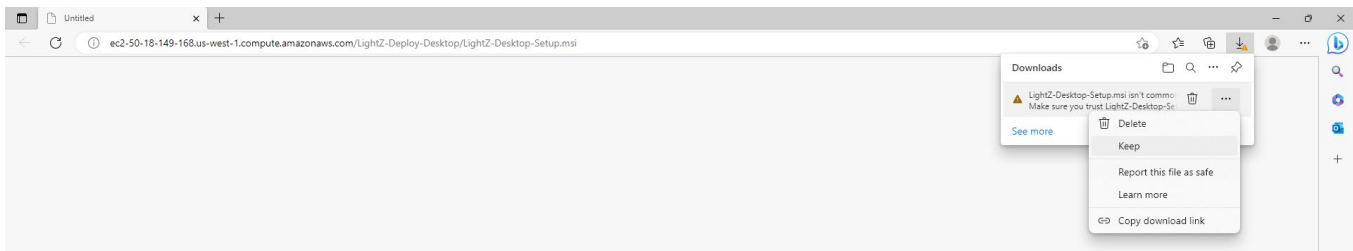
1. Because you're downloading a program, you'll probably see a yellow warning sign in the download box as seen below:



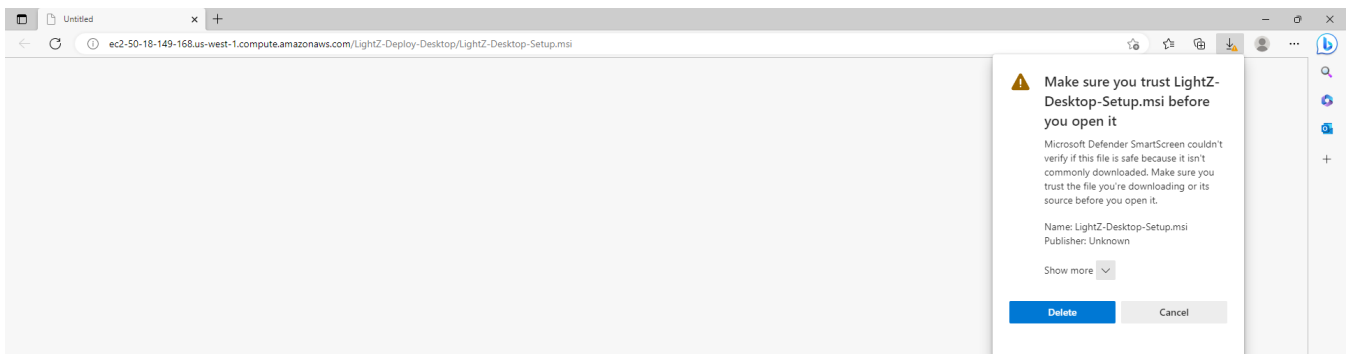
2. Just hover over the text to get the three dots to the right of the text to appear as below:



3. Then click the dots to see the pull-down choices and click **Keep** as below:

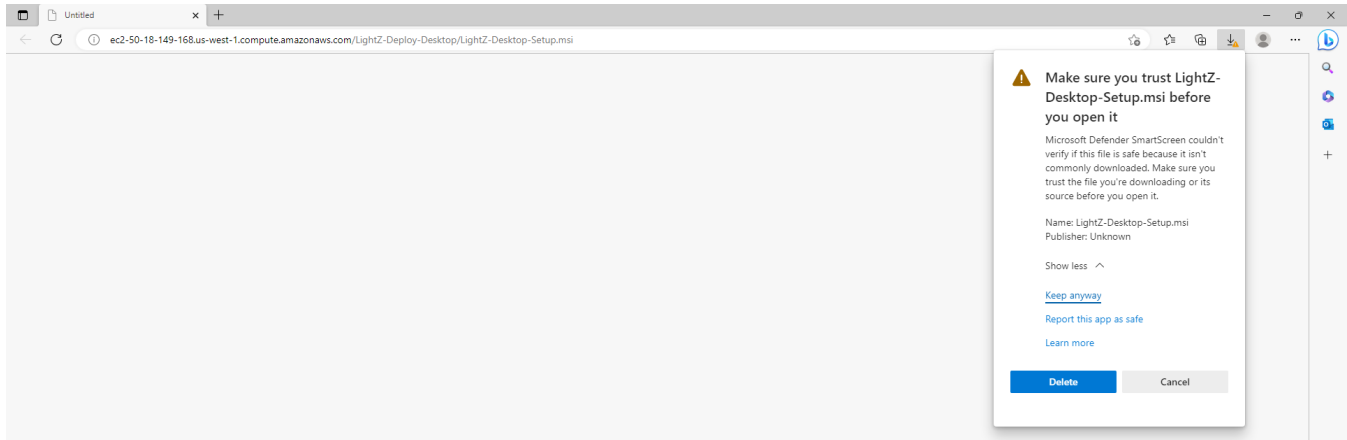


4. You'll then get another warning and pull-down **Show more** as below:



LightZ-4all™ Desktop Installation & Training Guide

5. Then click **Keep anyway** as below:



6. The download will now appear as a regular download as below:

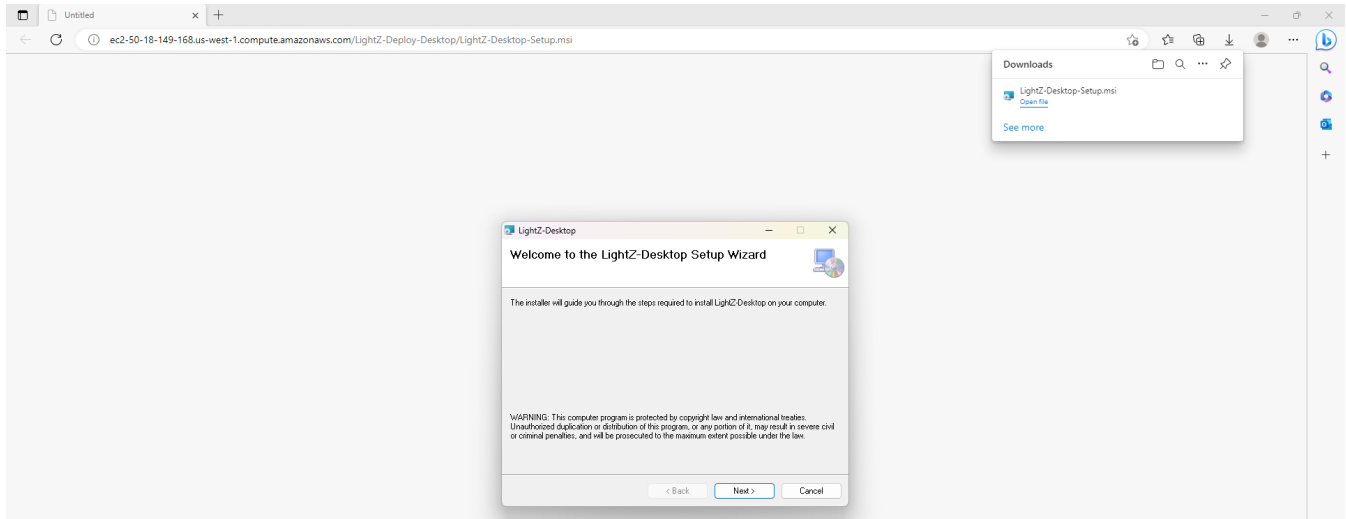


7. If during the download you received the image to the left below then click the **More info** to reveal the image to the right as appears below and click **Run anyway** button.



LightZ-4all™ Desktop Installation & Training Guide

- Now click **Open file** then the **Welcome to the LightZ-Desktop Setup Wizard** will appear and just follow the steps for a routine installation as below:

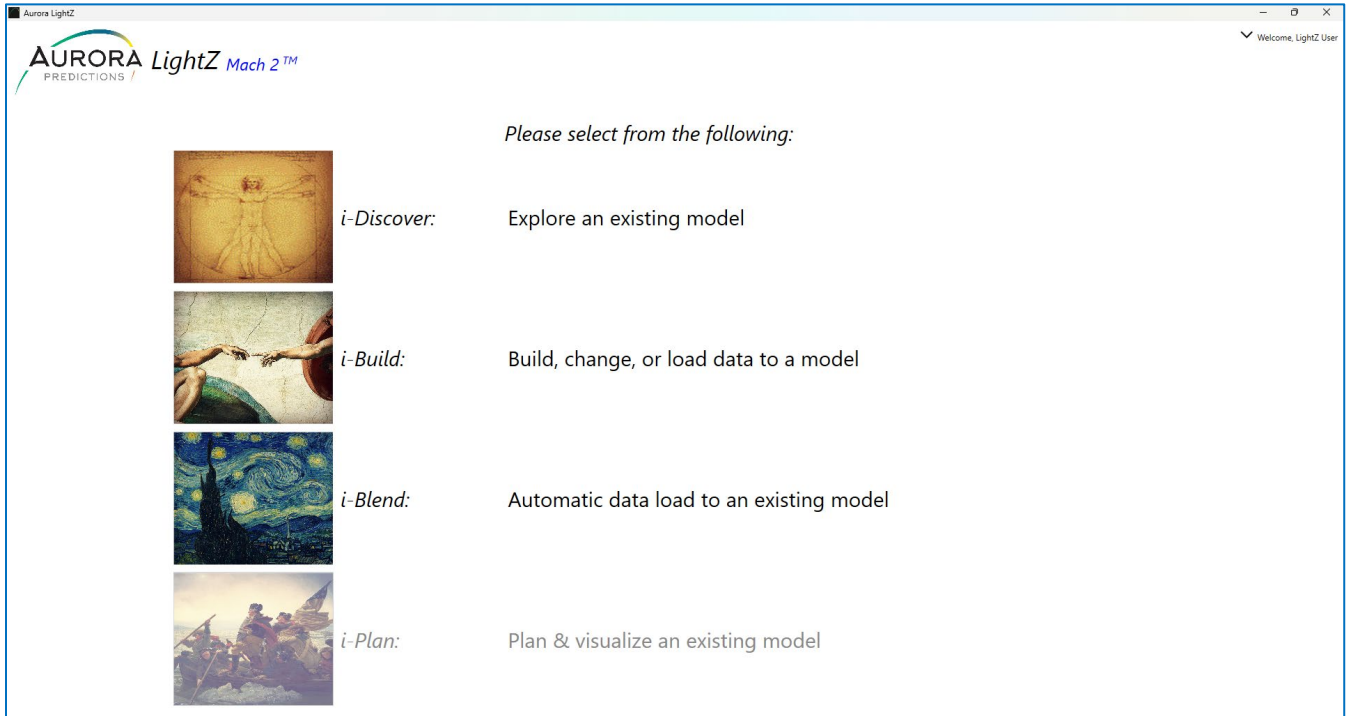


- When installation is complete a **LightZ™** icon will appear on your desktop and simply double click to open LightZ™.

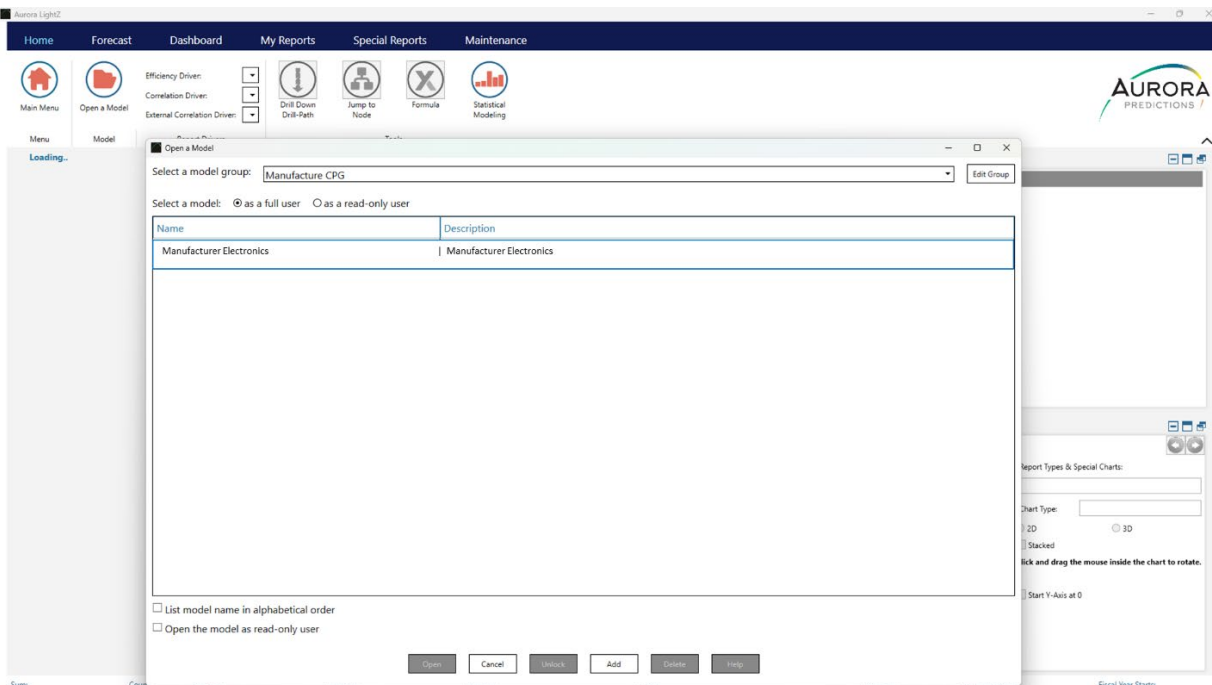


LightZ-4all™ Desktop Installation & Training Guide

10. Upon opening LightZ-4all™ the main menu will appear and click the **i-Discover** icon as below:



11. Once i-Discover opens there will be a model selection window with one training model of **Manufacturer Electronics** and click that model then the **Open** button will activate at the bottom of the window and click that button as below:



LightZ-4all™ Desktop Installation & Training Guide

12. Once the model is open, click the **Maintenance** tab on the top blue bar then click the **Training Video** icon on the ribbon to be taken to the video training library to learn LightZ-4all™ as below:

13. To learn how to build, load data, and change a model in 1 hour simply click the **1-Hour i-Build Quick Start Training** video as below: